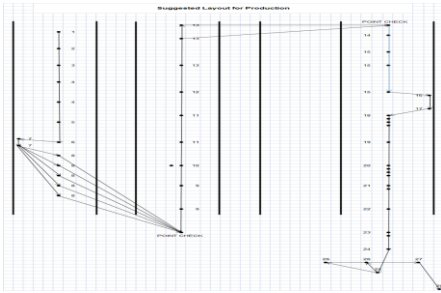


M/s Multinational Export Bureau – Reducing Rework, Increasing Profits



Layout Redesign at Stitching

“Their team was really proficient and supportive. They have helped us identifying hidden problems and supported us to remove them. We have achieved enormous improvements”

Mr. Babar Khan
Director, M.E.B.

ESPIRE is a partnership project between bfz gGmbH, Business associations, and SMEDA.

By partnering with ESPIREgreen, industries are taking responsibility to reduce environmental impact of operations and improving resource efficiency cost effectively by adopting the following four services:

- **Chemical Management (CM) Assessment** to identify Waste Streams and Risks in Chemical Flow and recommendations for Risk Mitigation and Wastage Reduction
- **Productivity Assessments** to analyze Process and Material Flows, identify Production Wastes and recommendations for improving Productivity
- **Resource Efficiency (RE) Assessment** to identify waste streams in processes and facilities and recommendations for Wastage Reduction through Good Housekeeping
- **Training of Companies** on Green Productivity issues like Health, Safety, Environment etc. to build an enabling environment for sustainability
- www.espire.com.pk

Background

M/s MEB is a group of companies engaged in the manufacturing and exporting of quality knitwear, apparels and other textile products. Established in 1988, it has been growing consistently & continuously improving, enhancing its services and quality of systems & products.

ESPIRE Intervention

In March 2013, Mr. Babar Khan, Director, showed interest in the Green Productivity (GP) Assessment services offered by ESPIREgreen (see description on the left).

For this purpose, a team of three ESPIREgreen Consultants was assigned to the factory. During the GP Assessment improvement potential was identified in Energy Efficiency, Productivity Enhancement and Occupational Health and Safety.

A Team was formed and trained to ensure sustainability at the company to improve productivity further without external support.

For 3 months the consultant assigned by ESPIREgreen monitored and supported implementation, documented the progress and quantified the realized cost savings.

Achievements

MEB were able to reduce transportation of product by 70% [from 500 meters to 152 meters] by rearranging the layout of stitching department.

Implementation of other improvement measures resulted in annual savings of 2.55 Million PKR with an investment of only 0.35 Million PKR at payback time of less than two months.

Safety at workplace was also improved by the isolation of boilers near emergency exits and creating awareness in workers through trainings.

GP MEASURES [implemented within the first 3 months]	ANNUAL SAVING [M-PKR]	INVESTMENT [M-PKR]
Rework and Rejects	2.1	0
Installation of Servo Motors	0.25	0.3
Installation of Electronic Ballasts	0.2	0.05
Total	2.55	0.35